

North Carolina

DEPARTMENT OF TRANSPORTATION

Lumberton Comprehensive Transportation Plan – Public Workshop Presentation

John A. (Andy) Bailey

March 17, 2015



https://connect.ncdot.gov/projects/planning/Pages/CTP-Details.aspx?study_id=Lumberton

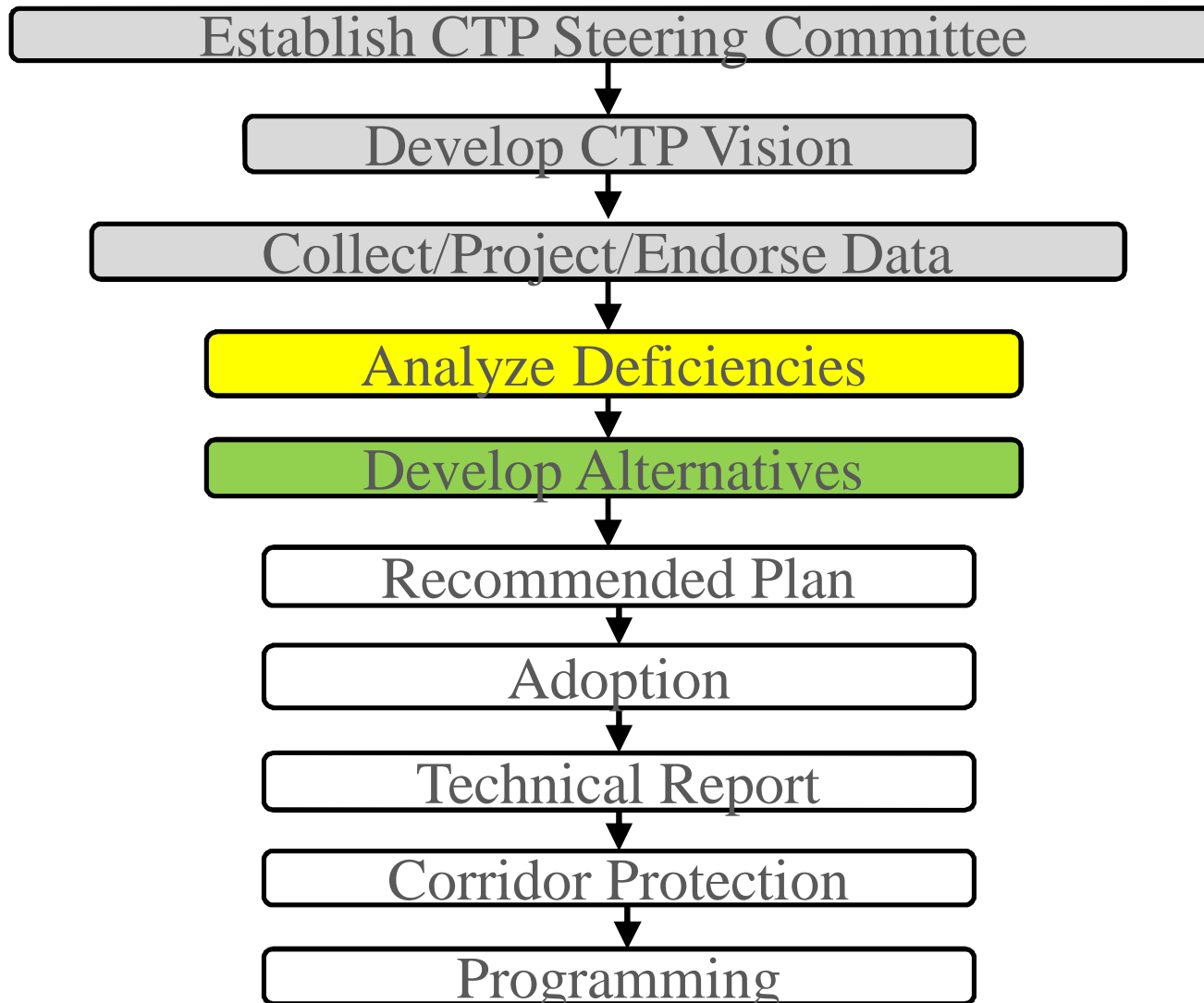
What is Transportation Planning?

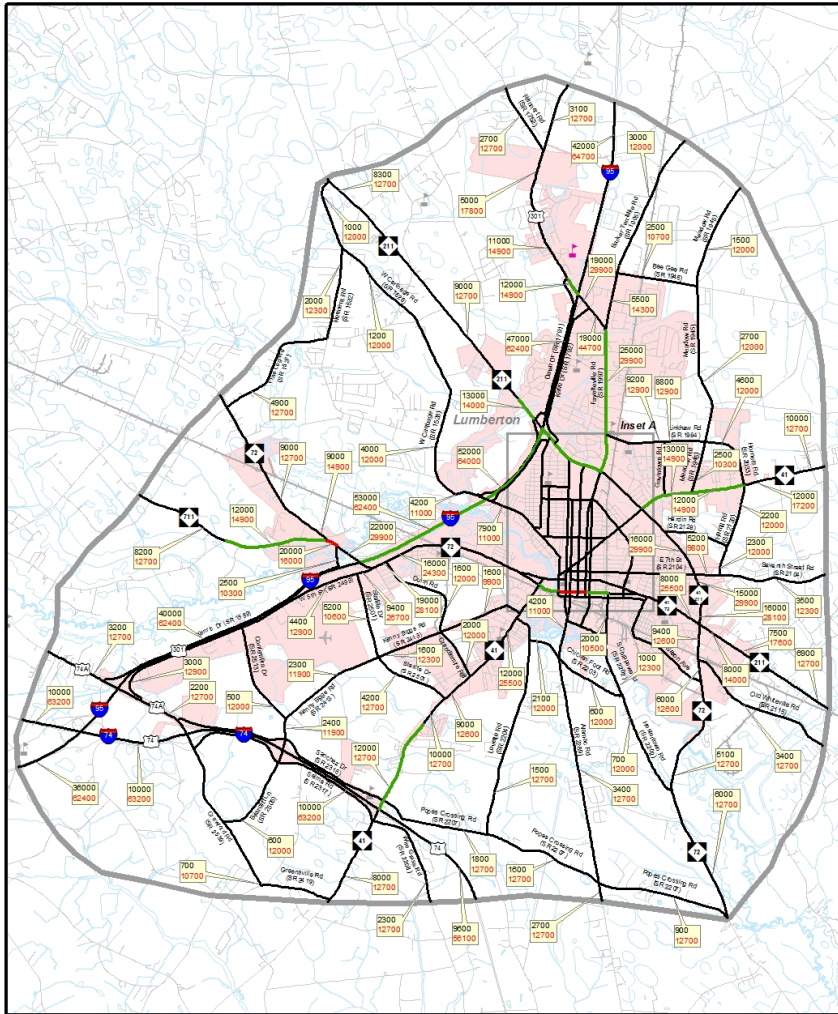
Transportation Planning is the process by which NCDOT, local officials and local planning organizations collaborate to develop a comprehensive transportation plan (CTP) for a specified planning area. CTPs depict recommended improvements to local transportation systems needed to meet existing and future multi-modal travel demands.

What are the Benefits of having a CTP?

- Common long range vision
- More detailed project information
- Better integration of different plans.
- Reduced costs
- Minimization of impacts
- Stronger ties to local priorities.
- Documentation for use in future development and transportation decisions.

Where Are We in the Process?



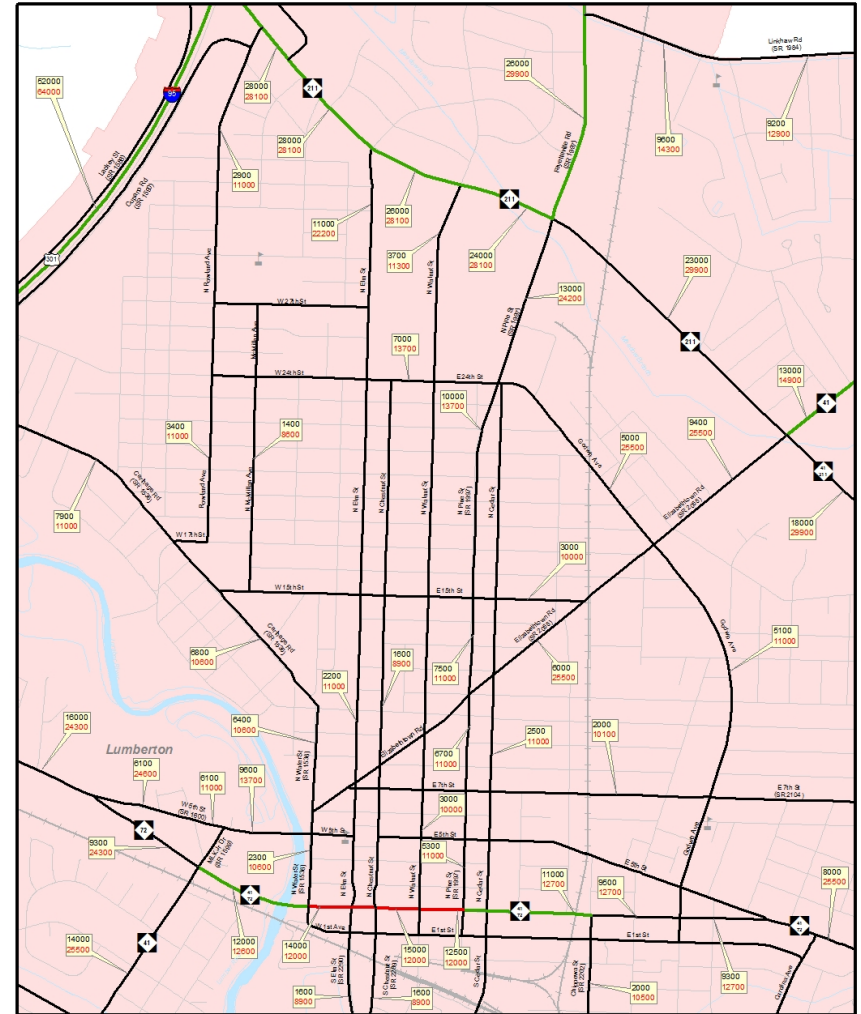


8100	2014 Volume (AADT)	0 0.25 0.5 1 Miles
12400	2014 Capacity	
	Network Roads	Airport
	Near Capacity	Community College
	Over Capacity	Schools
	Planning Boundary	Rivers and Streams
	Roads	Water Bodies
	Railroads	City Limits

Sheet 1 of 2
Base map date: June 2014

Figure 2
2014 Volumes and Capacity Deficiencies

Lumberton
Comprehensive Transportation Plan

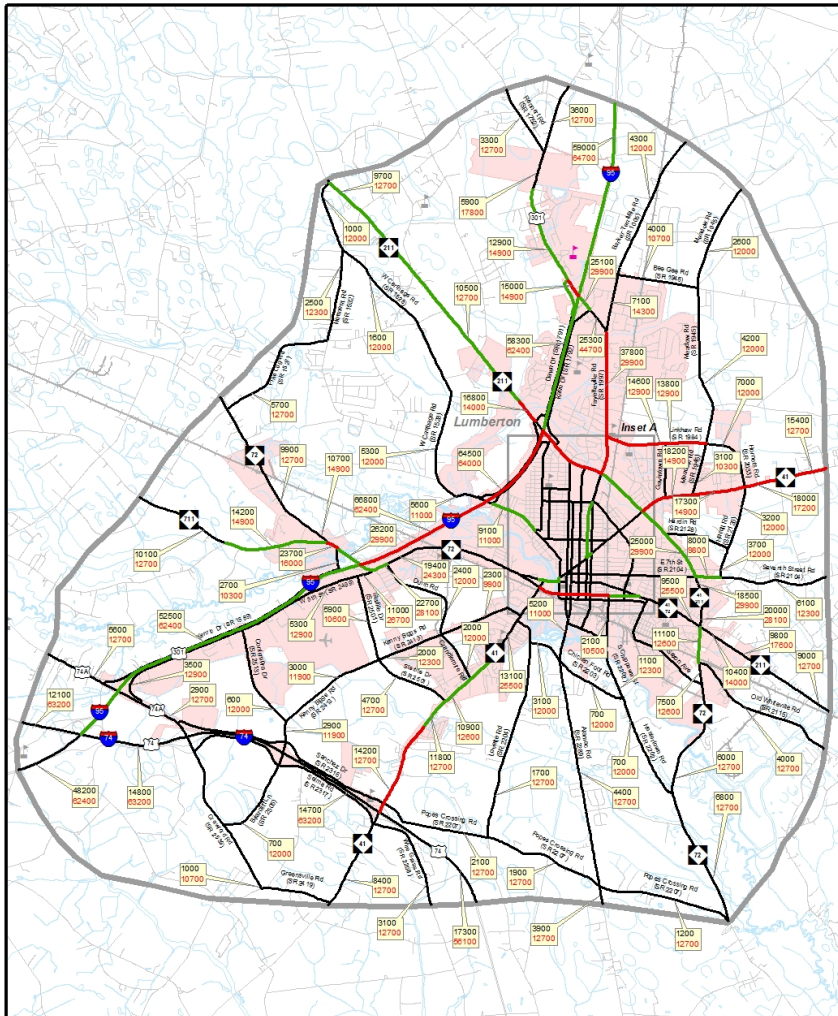


8100	2014 Volume (AADT)	0 0.16 0.3 Miles
12400	2014 Capacity	
	Network Roads	Schools
	Near Capacity	River and Streams
	Over Capacity	Water Bodies
	Roads	City Limits
	Railroads	

Sheet 1A of 2
Base map date: June 2014

Figure 2, Inset A
2014 Volumes and Capacity Deficiencies

Lumberton
Comprehensive Transportation Plan



8100	2040 Volume (AADT)
12400	2014 Capacity

- Network Roads
- Near Capacity
- Over Capacity
- Planning Boundary
- Roads
- Railroads
- ✈ Airport
- 🎓 Community College
- 🎓 Schools
- Rivers and Streams
- 🌊 Water Bodies
- 🏙 City Limits

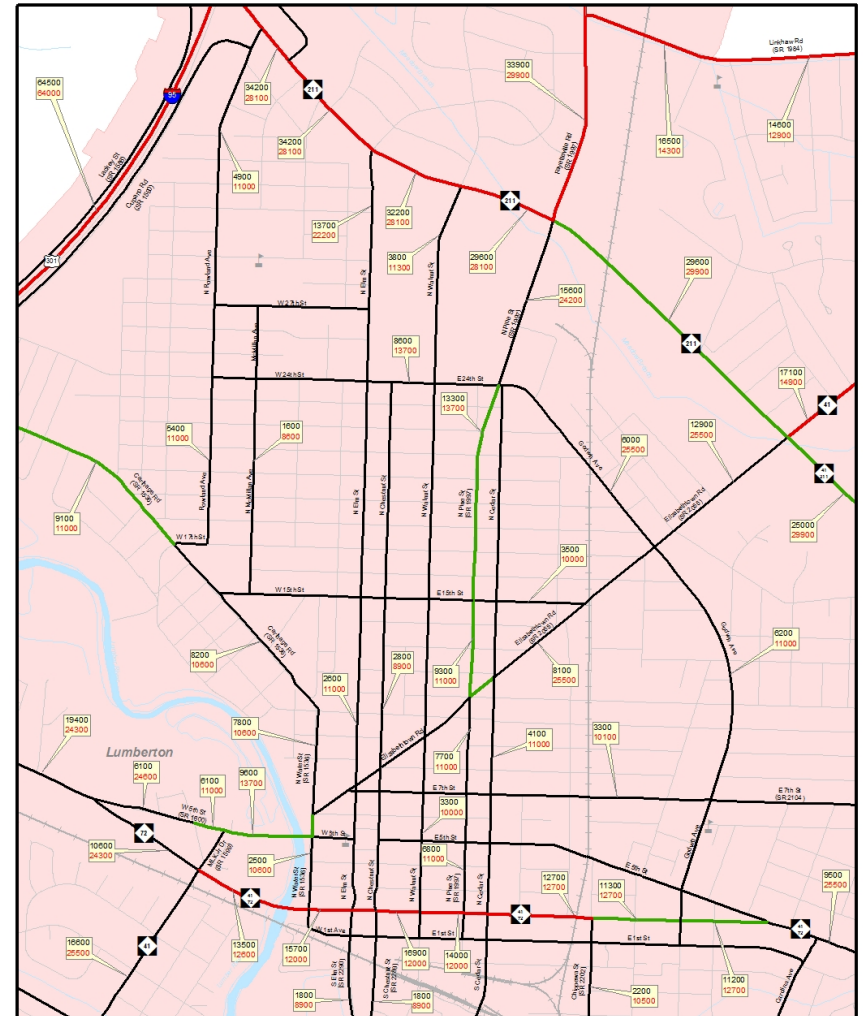
Scale: 0 0.25 0.5 1 1.5 Miles

Sheet 2 of 2

Base map date: June 2014

Figure 3
2040 Volumes and Capacity Deficiencies

Lumberton
Comprehensive Transportation Plan



8100	2040 Volume (AADT)
12400	2014 Capacity

- Network Roads
- Near Capacity
- Over Capacity
- Roads
- Railroads
- 🎓 Schools
- River and Streams
- 🌊 Water Bodies
- 🏙 City Limits

Scale: 0 0.15 0.3 Miles

Sheet 2A of 2

Base map date: June 2014

Figure 3, Inset A
2040 Volumes and Capacity Deficiencies

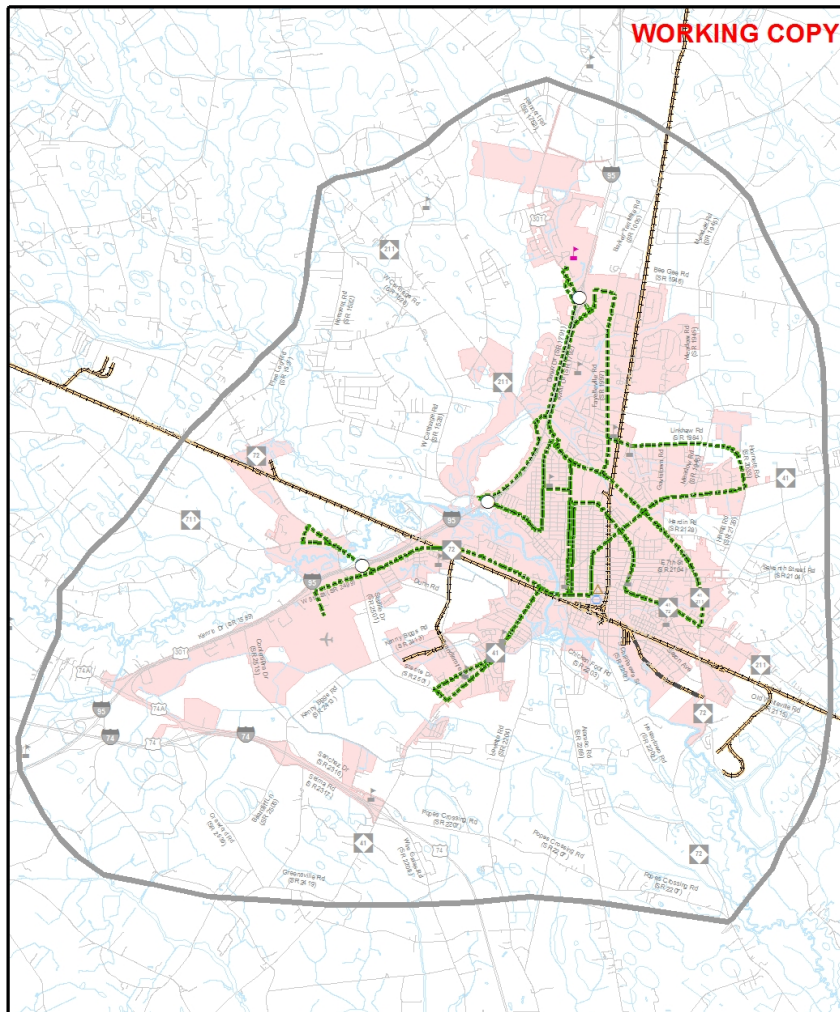
Lumberton
Comprehensive Transportation Plan

Base Year (2014) Capacity Issues

- I-95 – near capacity
- NC 41 – near capacity (two locations)
- NC 41/72 (downtown) – near or over capacity
- NC 72/711 – near or over capacity
- NC 211 – near capacity
- Fayetteville Road – near capacity

Future Year (2040) Capacity Issues

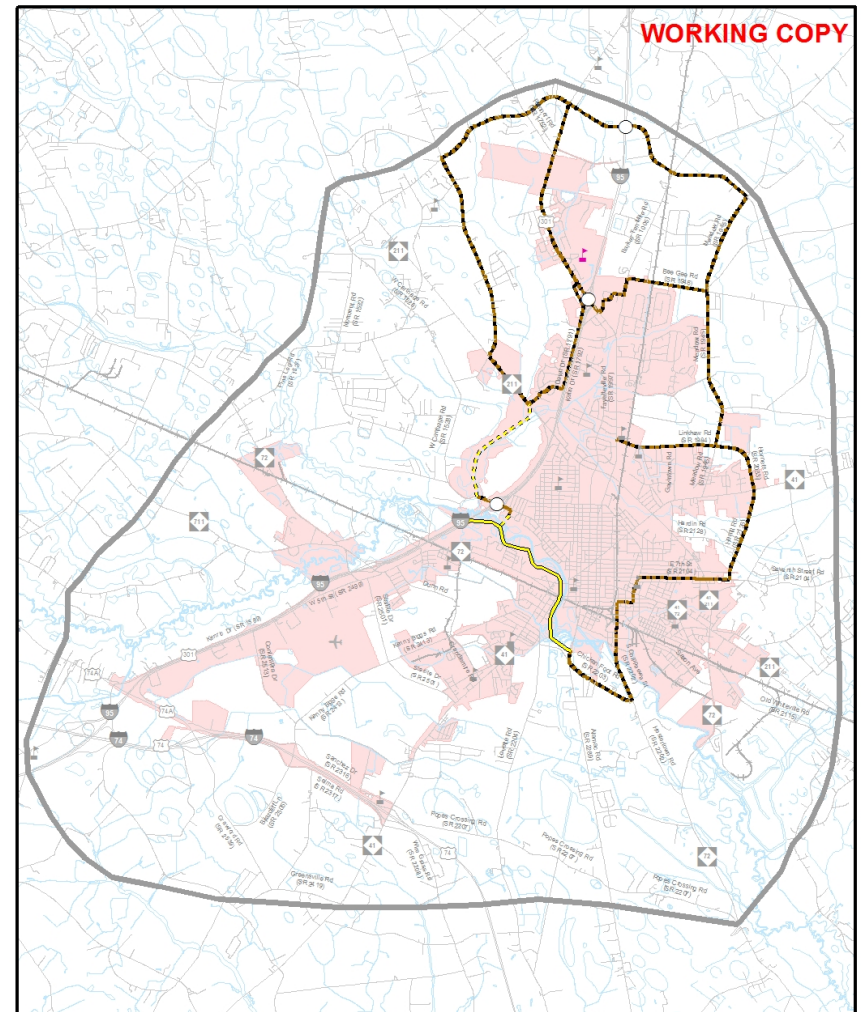
- I-95 – near or **over** capacity
- NC 41 – near or **over** capacity (two locations)
- NC 41/72 (downtown) – **over** capacity
- NC 72/711 – near or over capacity
- NC 211 – near or **over** capacity
- Fayetteville Road – near or **over** capacity
- **Linkhaw Road – over capacity**



Bus Routes Existing (Solid Green) Needs Improvement (Dashed Green) Recommended (Dotted Green)	Rail Corridor Active (Thick Dashed Black) Inactive (Thin Dashed Black) Recommended (Dotted Black)	Intermodal Connector Existing (Triangle with Black Border) Recommended (Triangle with Yellow Border)	0 0.25 0.5 1 1.5 Miles
Fixed Guideway Existing (Blue with White Dots) Needs Improvement (Blue with White Dots) Recommended (Blue with White Dots)	High Speed Rail Corridor Existing (Thick Solid Black) Recommended (Thin Solid Black)	Rail Stops Existing (Blue Circle) Recommended (Blue Circle)	Sheet 3 of 5 Base map date: June 2014 Refer to CTP document for more details
Operational Strategies Existing (Thick Solid Black) Needs Improvement (Thin Solid Black) Recommended (Dotted Black)	Existing Grade Separation (Circle with Black Border) Proposed Grade Separation (Circle with Grey Border)	Park and Ride Lot Existing (Blue Square with 'P') Recommended (Blue Square with 'P')	

Public Transportation and Rail Map

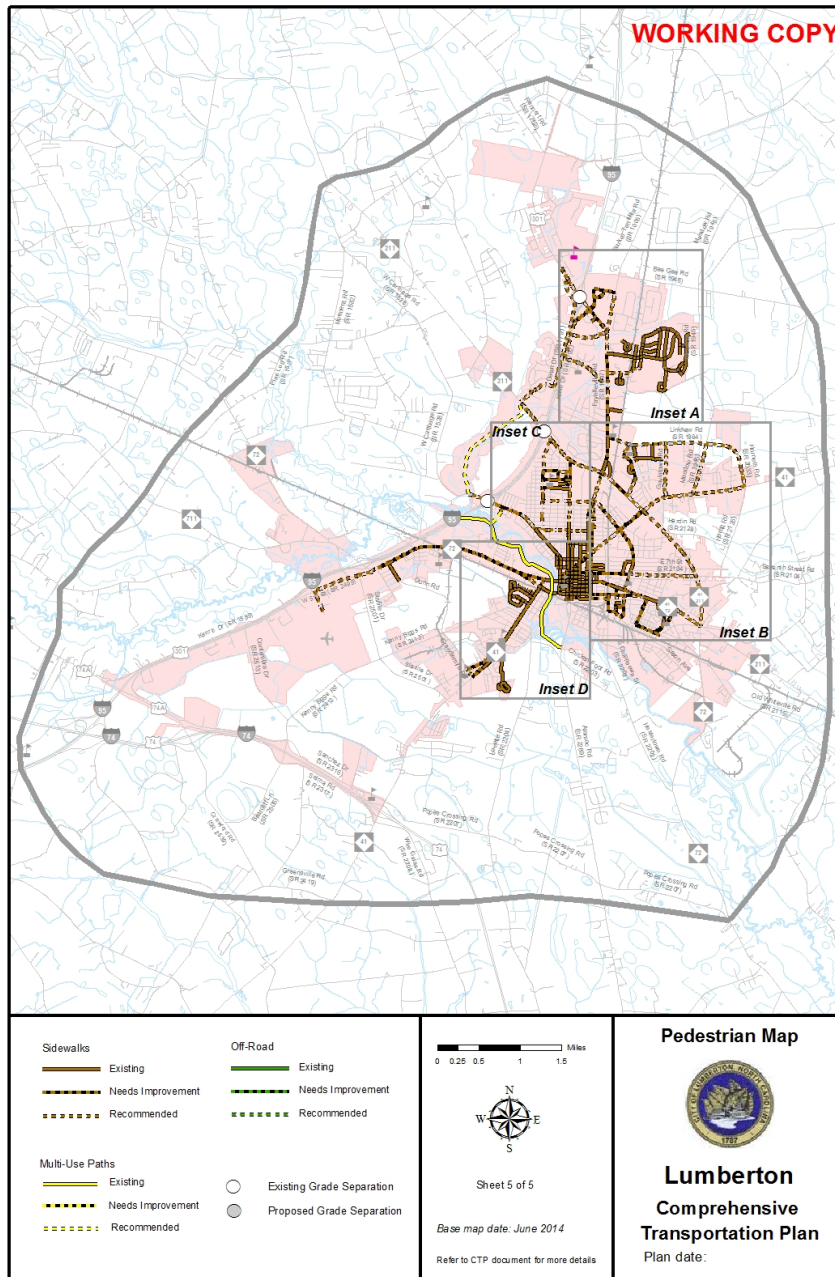
Lumberton Comprehensive Transportation Plan
Plan date:

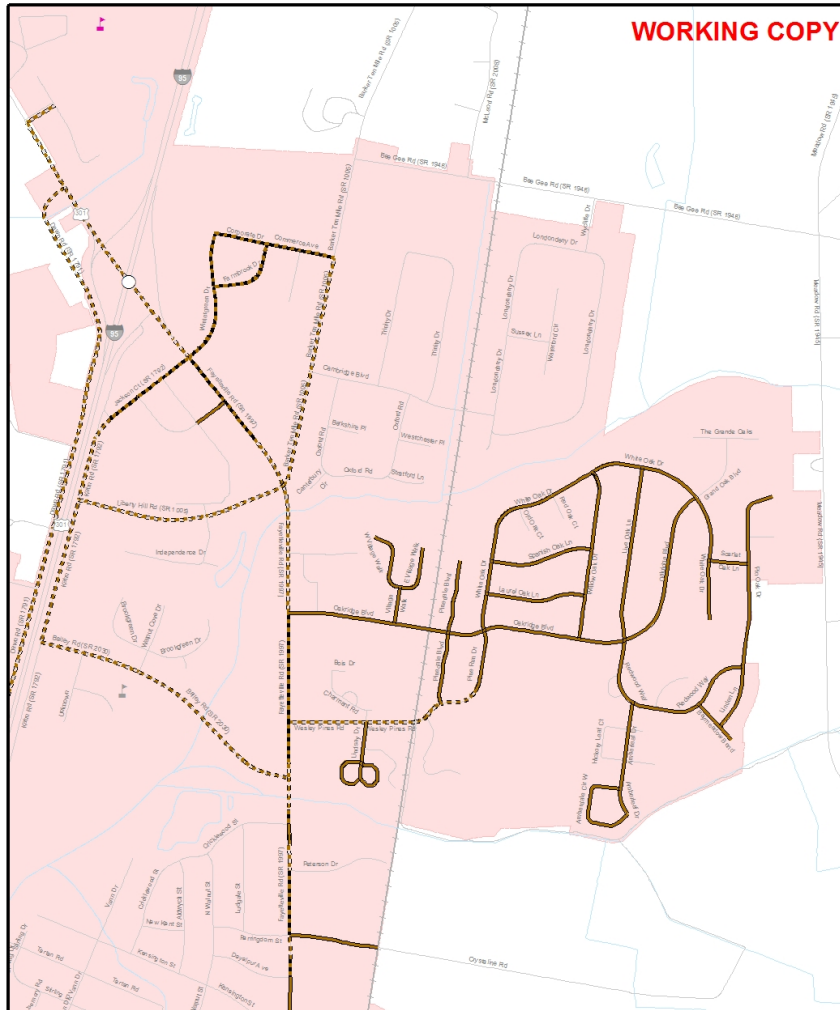


On-road Existing (Solid Yellow) Needs Improvement (Dashed Yellow) Recommended (Dotted Yellow)	Multi-Use Paths Existing (Solid Yellow) Needs Improvement (Dashed Yellow) Recommended (Dotted Yellow)	0 0.25 0.5 1 1.5 Miles
Off-road Existing (Solid Green) Needs Improvement (Dashed Green) Recommended (Dotted Green)	Existing Grade Separation (Circle with Black Border) Proposed Grade Separation (Circle with Grey Border)	Sheet 4 of 5 Base map date: June 2014 Refer to CTP document for more details

Bicycle Map

Lumberton Comprehensive Transportation Plan
Plan date:



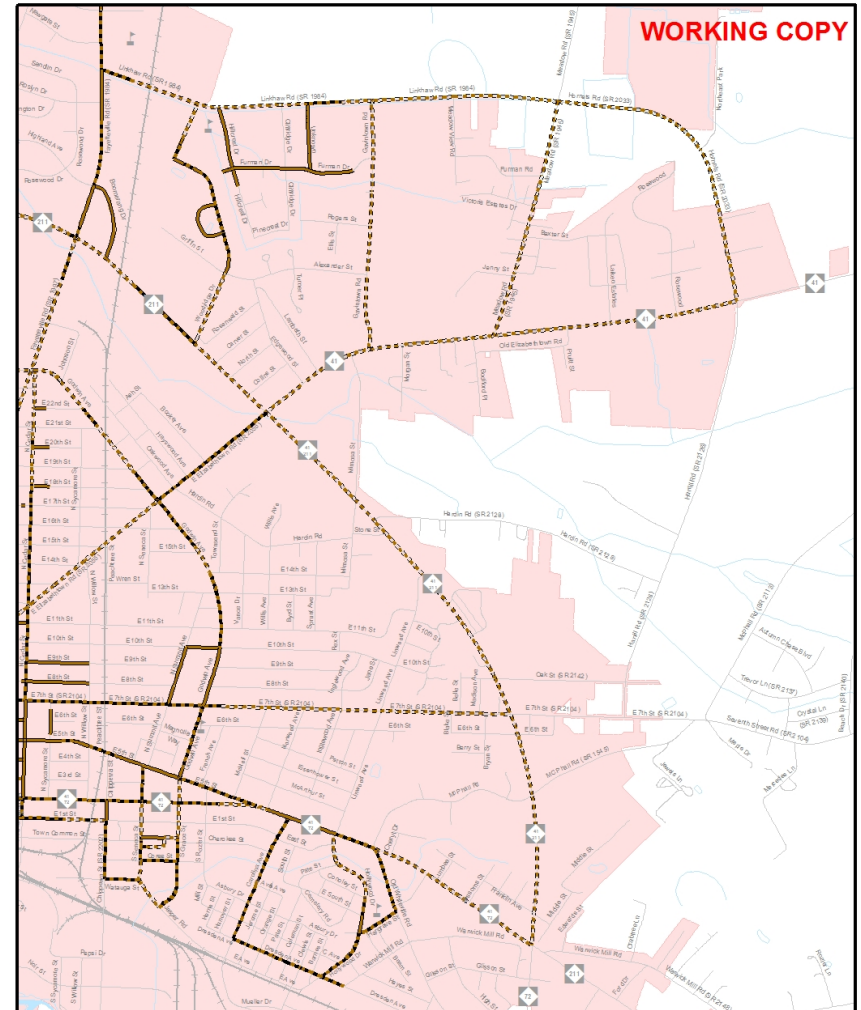


WORKING COPY

<p>Sidewalks</p> <ul style="list-style-type: none"> Existing Needs Improvement Recommended <p>Multi-Use Paths</p> <ul style="list-style-type: none"> Existing Needs Improvement Recommended 	<p>Off-Road</p> <ul style="list-style-type: none"> Existing Needs Improvement Recommended 	<p>0 0.05 0.1 0.2 0.3 Miles</p> <p>Sheet 5A of 5</p> <p>Base map date: June 2014</p> <p>Refer to CTP document for more details</p>
---	--	--

Pedestrian Map Inset A

**Lumberton
Comprehensive
Transportation Plan**
Plan date:

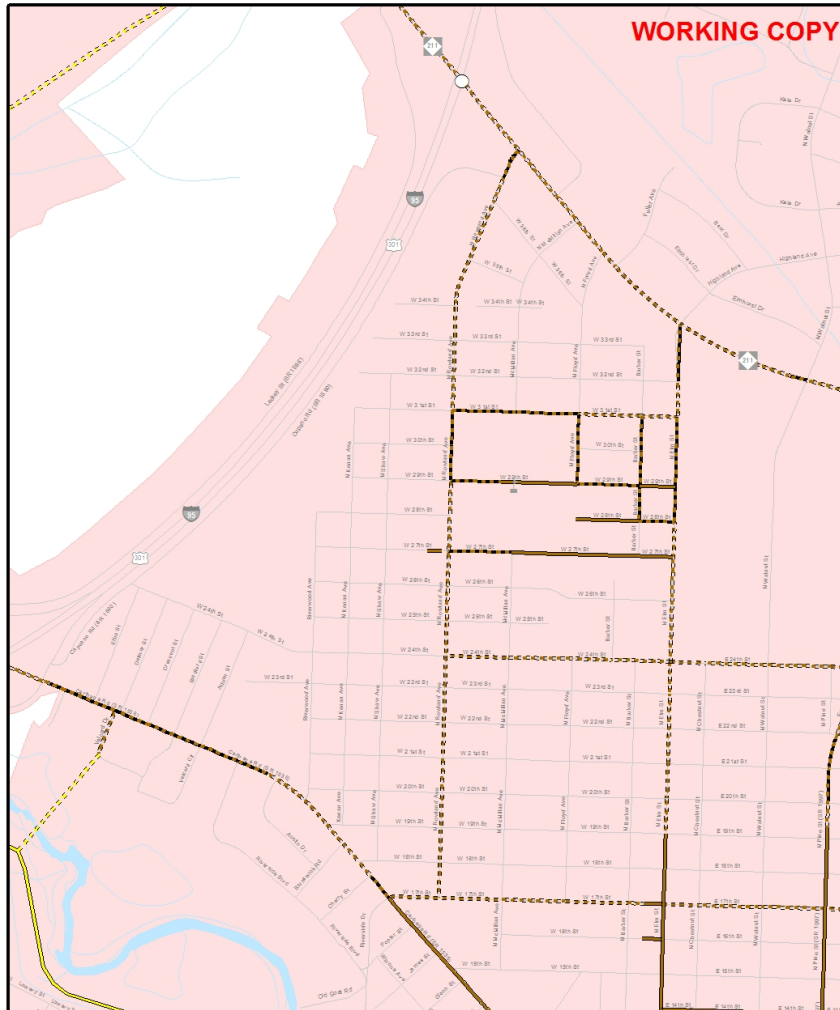


WORKING COPY

<p>Sidewalks</p> <ul style="list-style-type: none"> Existing Needs Improvement Recommended <p>Multi-Use Paths</p> <ul style="list-style-type: none"> Existing Needs Improvement Recommended 	<p>Off-Road</p> <ul style="list-style-type: none"> Existing Needs Improvement Recommended 	<p>0 0.05 0.1 0.2 0.3 Miles</p> <p>Sheet 5B of 5</p> <p>Base map date: June 2014</p> <p>Refer to CTP document for more details</p>
---	--	--

Pedestrian Map Inset B

**Lumberton
Comprehensive
Transportation Plan**
Plan date:

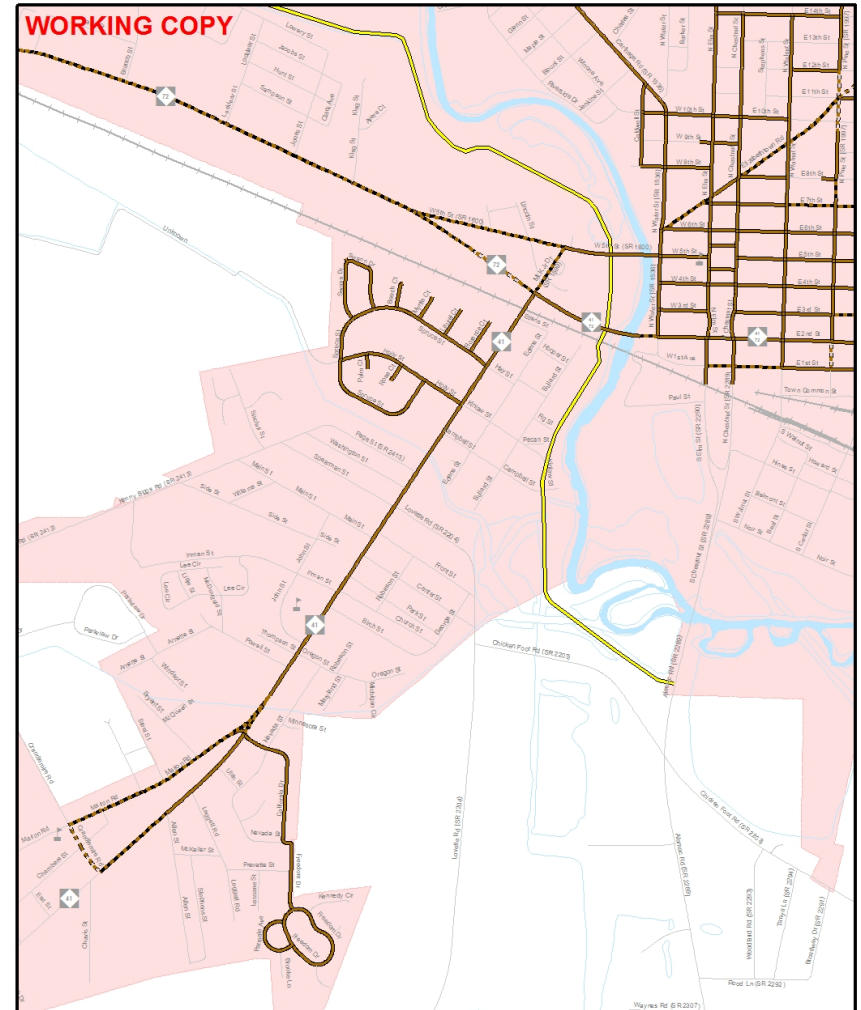


<p>Sidewalks</p> <ul style="list-style-type: none"> Existing Needs Improvement Recommended <p>Multi-Use Paths</p> <ul style="list-style-type: none"> Existing Needs Improvement Recommended 	<p>Off-Road</p> <ul style="list-style-type: none"> Existing Needs Improvement Recommended <p>○ Existing Grade Separation ● Proposed Grade Separation</p>	<p>0 0.05 0.1 0.2 Miles</p> <p>Sheet 5C of 5</p> <p>Base map date: June 2014</p> <p>Refer to CTP document for more details</p>
--	--	--

Pedestrian Map Inset C

**Lumberton
Comprehensive
Transportation Plan**

Plan date:



<p>Sidewalks</p> <ul style="list-style-type: none"> Existing Needs Improvement Recommended <p>Multi-Use Paths</p> <ul style="list-style-type: none"> Existing Needs Improvement Recommended 	<p>Off-Road</p> <ul style="list-style-type: none"> Existing Needs Improvement Recommended <p>○ Existing Grade Separation ● Proposed Grade Separation</p>	<p>0 0.125 0.25 Miles</p> <p>Sheet 5 of 5</p> <p>Base map date: June 2014</p> <p>Refer to CTP document for more details</p>
--	--	---

Pedestrian Map Inset D

**Lumberton
Comprehensive
Transportation Plan**

Plan date:

Next Steps/Tentative Schedule

- **March 2015 – Conduct Public Workshop regarding transportation deficiencies**
- May 2015 – Develop Draft CTP Recommendations based on CTP Steering Committee and public input.
- August 2015 – Draft CTP Recommendations reviewed in a public workshop and presented to Lumberton City Council
- October 2015 – Lumberton City Council adopts the CTP
- **December 2015 – NCDOT adopts the CTP**

Future Questions or Concerns?

Contact: John A. (Andy) Bailey, Project Engineer
by phone: (919) 707-0991 or email: jabailey@ncdot.gov

Wayne C. Davis, PhD, PE, Triad Supervisor
by phone: (919) 707-0987 or email: wcdavis@ncdot.gov

Joe Bailey, PE, Division Planning Engineer
By phone: (910) 486-1493 or email: jwbailey1@ncdot.gov

Janet Robertson, Lumber River Rural Planning Organization
by phone: (910) 272-5049 or email: jfr@lrcog.org